



# Blinn College District

Course Success Summary Report

Office of Institutional Research and Effectiveness

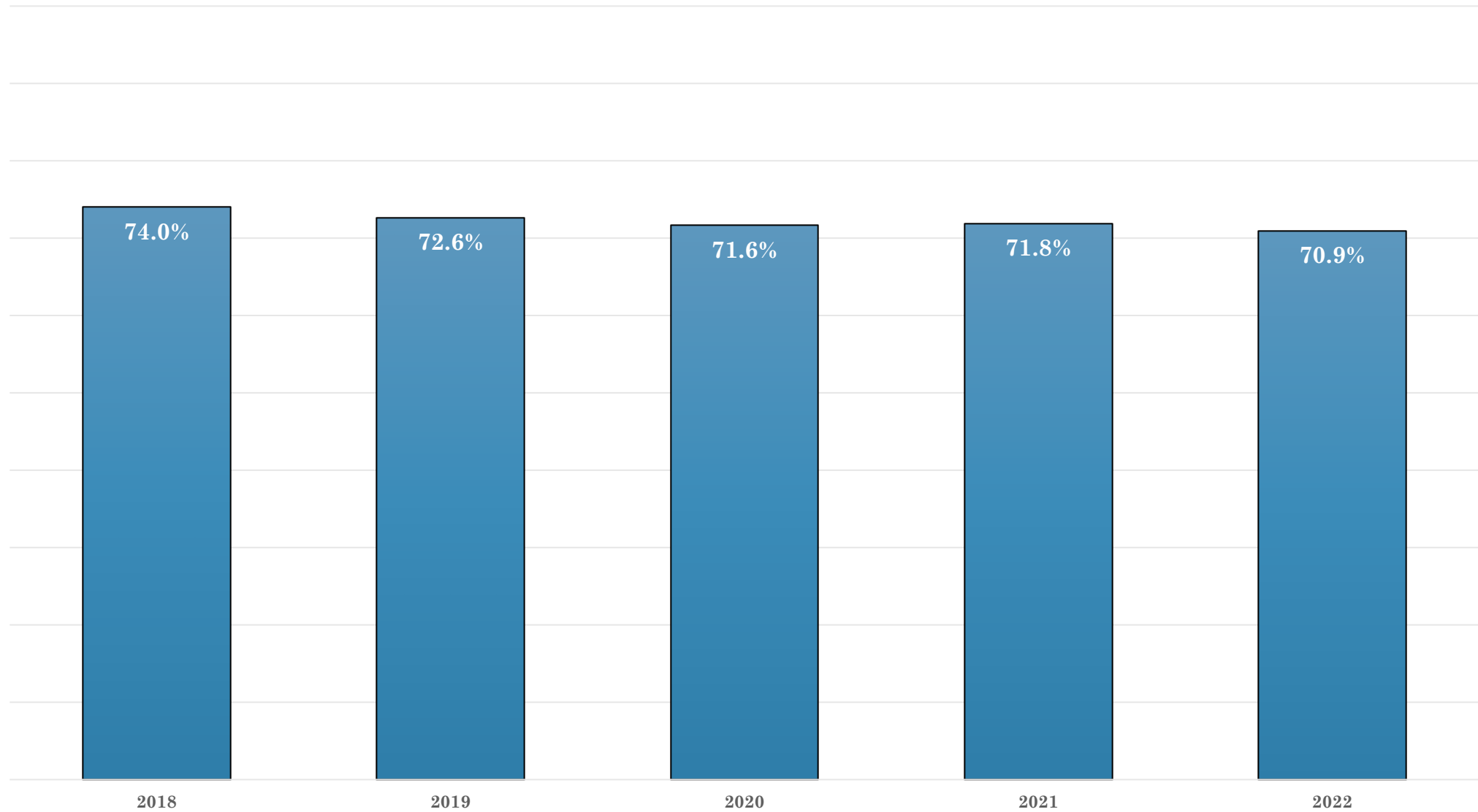
Updated: Spring 2023

# Analysis Notes

- *Successful Grade Rate* is defined as the proportion of successful grades (A, B, Cs) earned by students divided by the total number of students enrolled in the specific comparison.
- Successful Grade Rate is a sub-set of Course Completion Rate
- Greater values for this metric are evaluated as more positive as they indicate increased levels of student success.
- These metrics are theoretically leading indicators of student graduation and/or transfer.

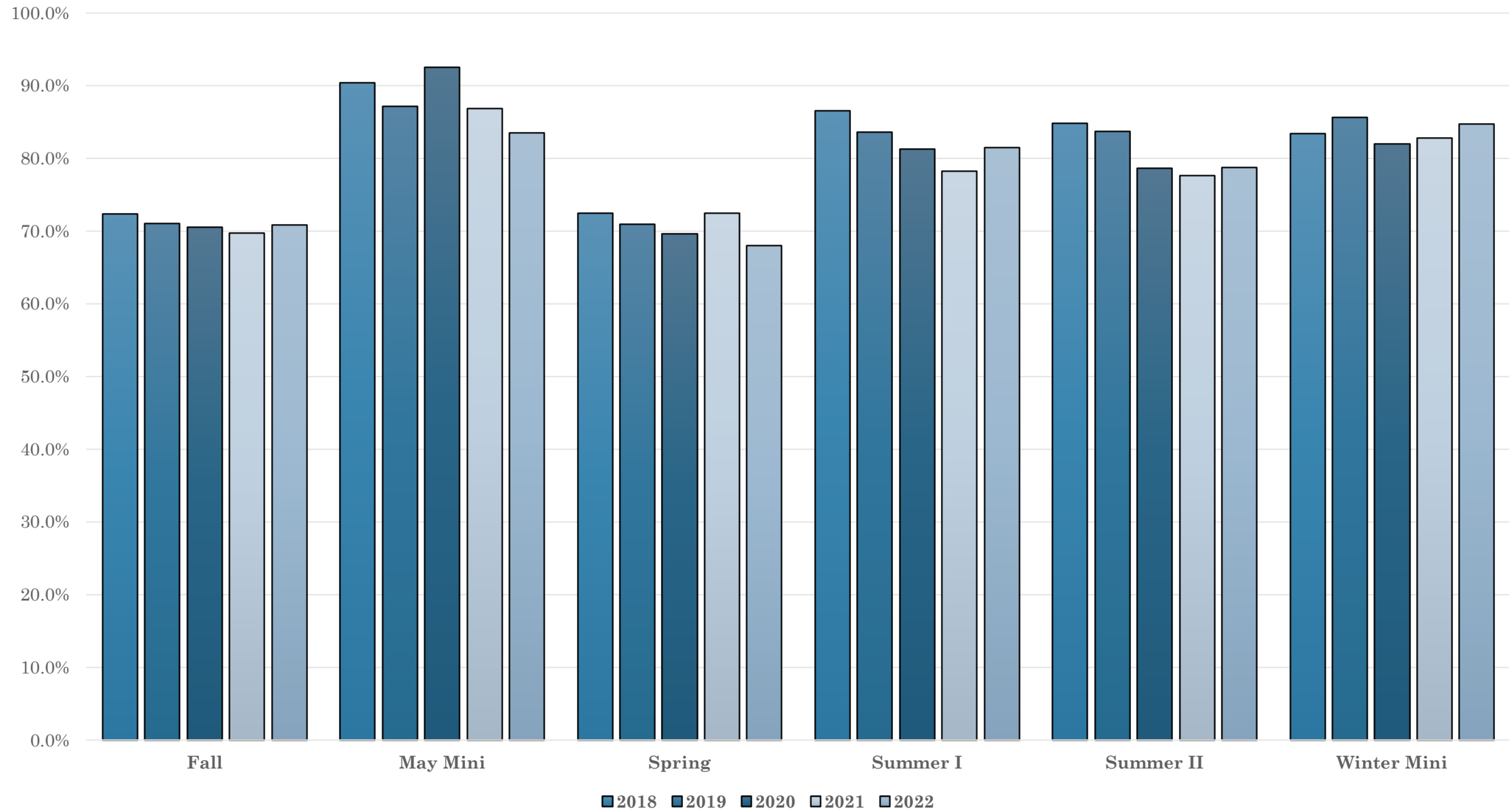
# Course Success Rate

# Successful Grade Rate by Academic Year



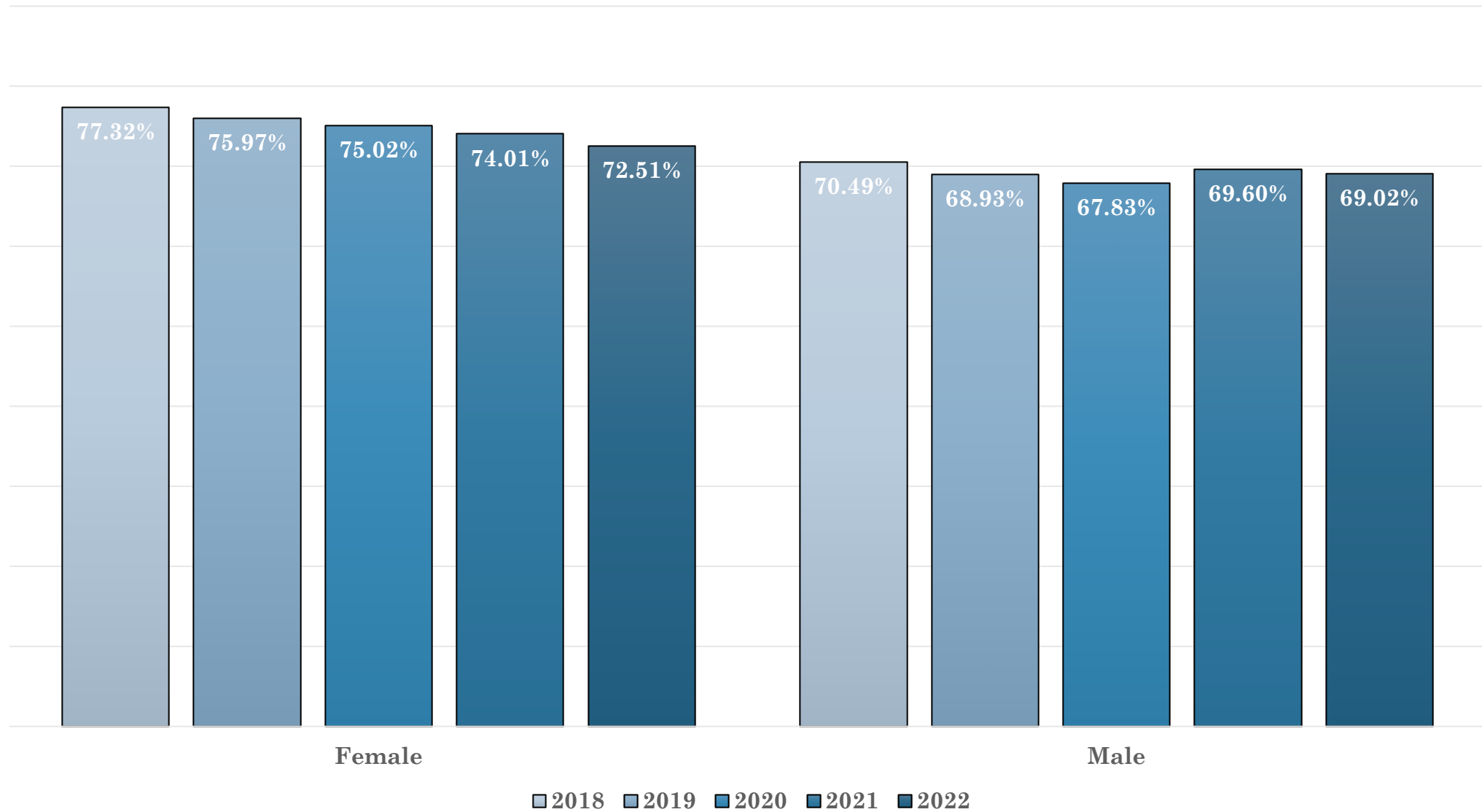
Source: Argos Grades Analysis Data Block, 2018-2022

# Successful Grade Rate by Semester



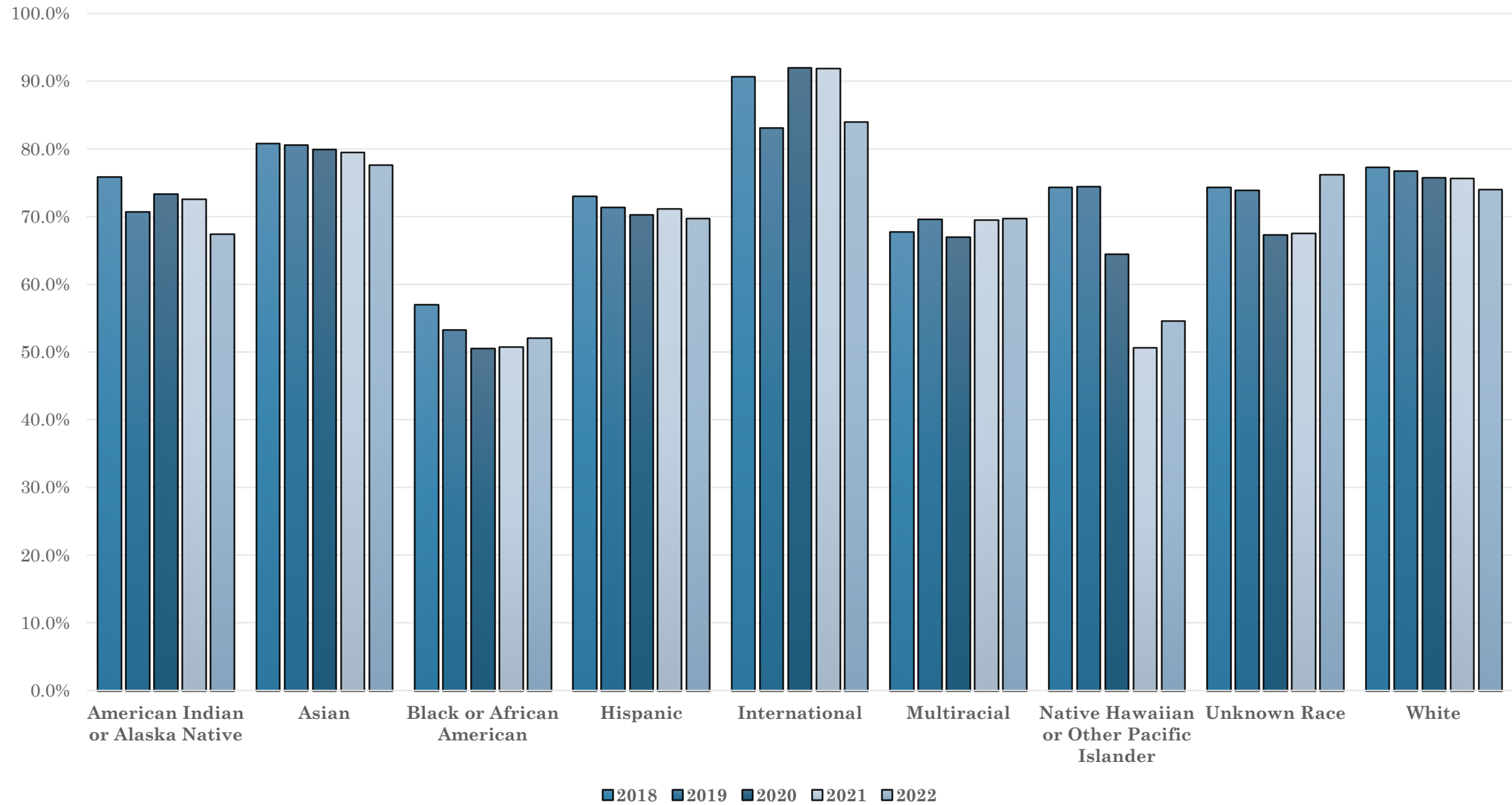
Source: Argos Grades Analysis Data Block, 2018-2022

# Successful Grade Rate by Gender



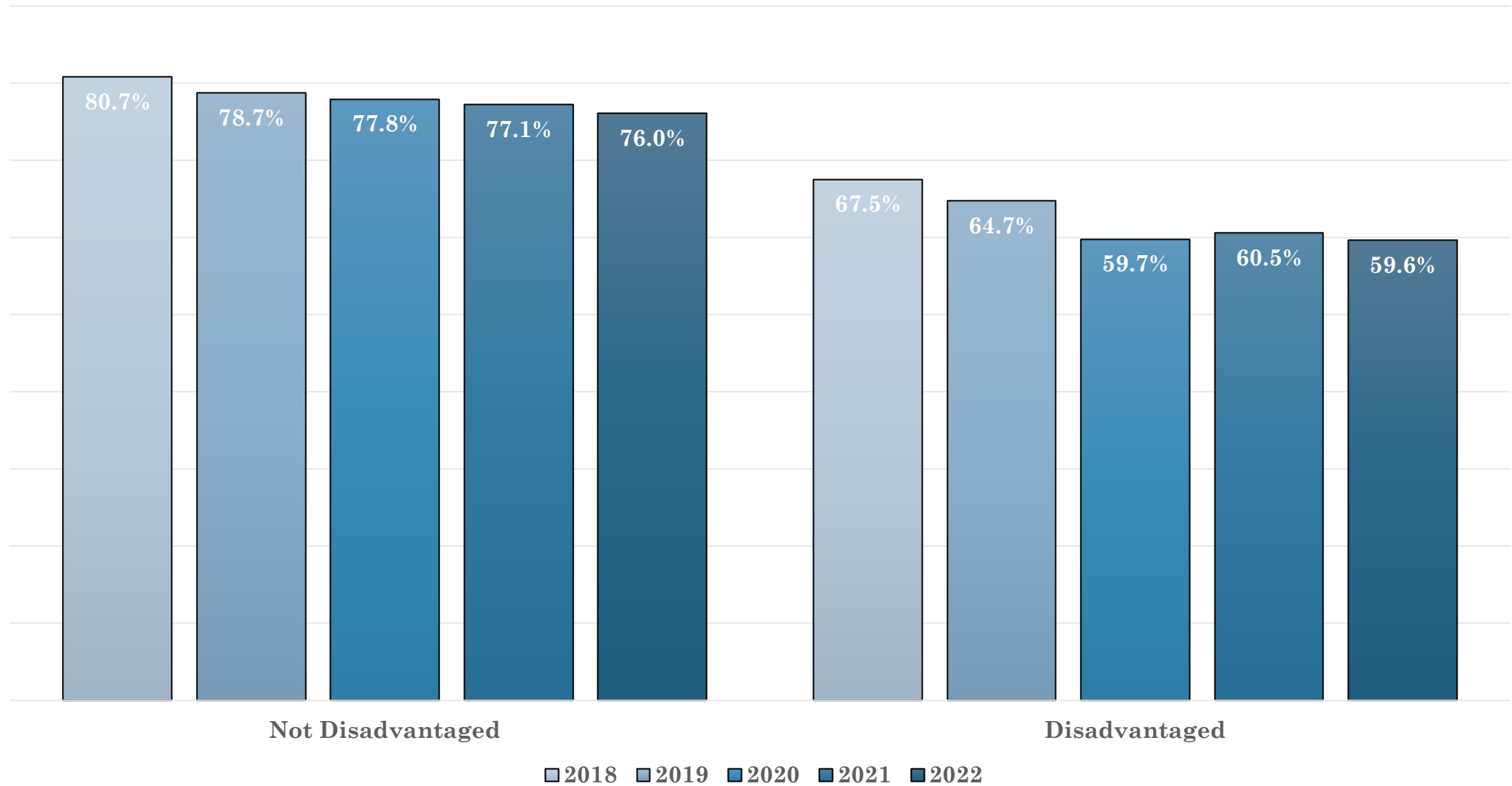
Source: Argos Grades Analysis Data Block, 2018-2022

# Successful Grade Rate by Ethnicity



Source: Argos Grades Analysis Data Block, 2018-2022

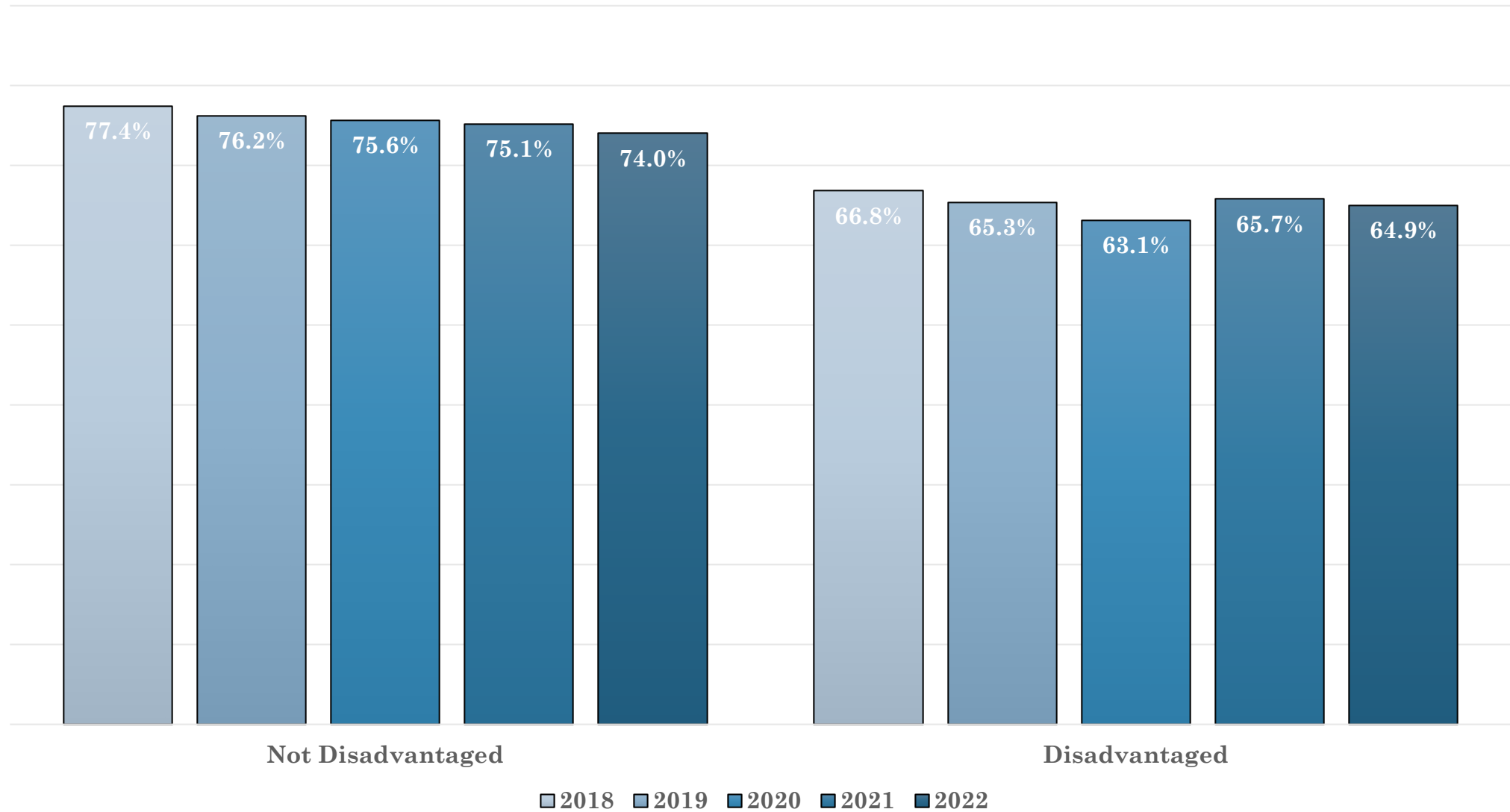
# Successful Grade Rate by Academic Disadvantage



Source: Argos Grades Analysis Data Block, 2018-2022

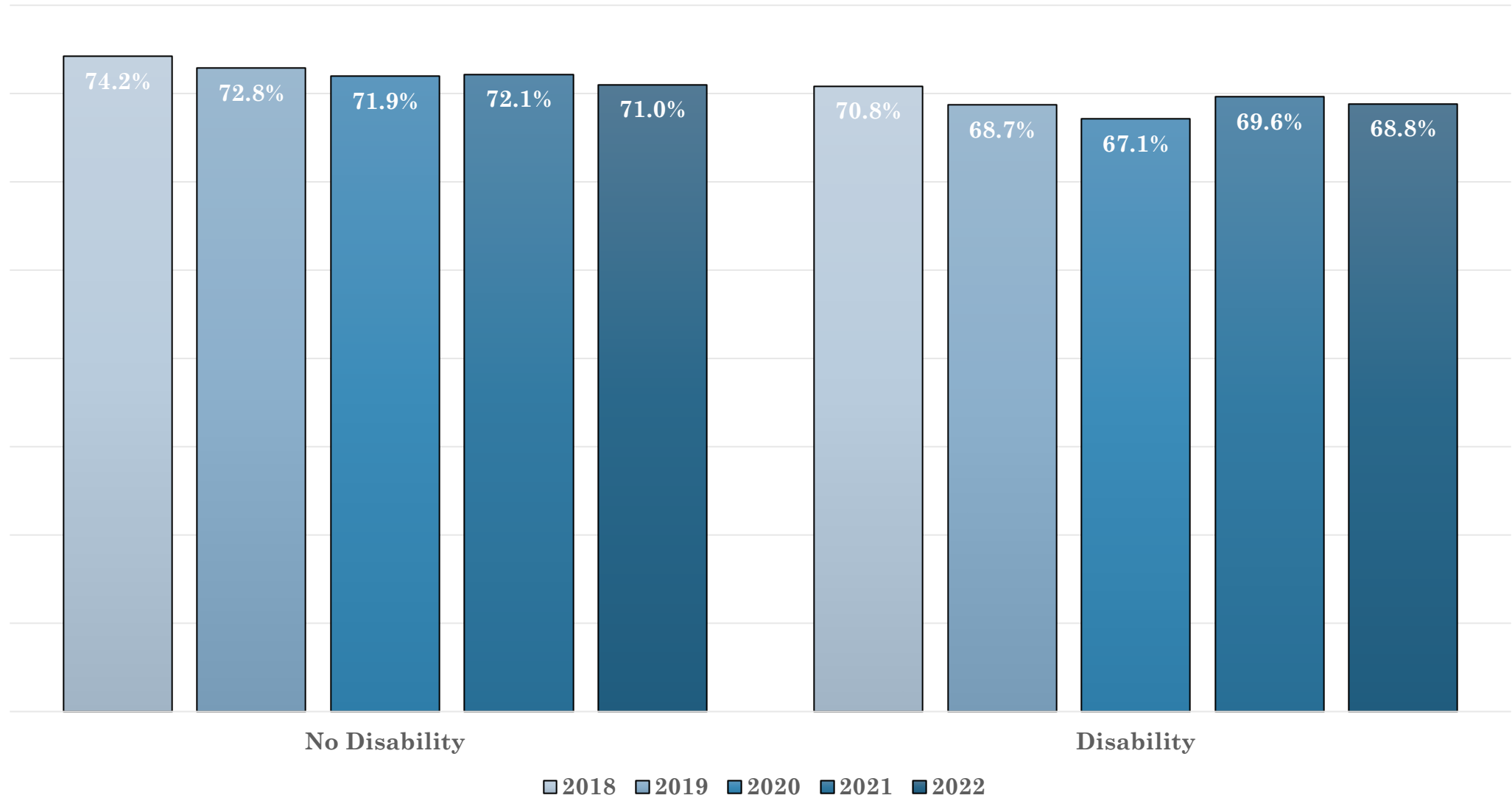


# Successful Grade Rate by Economic Disadvantage



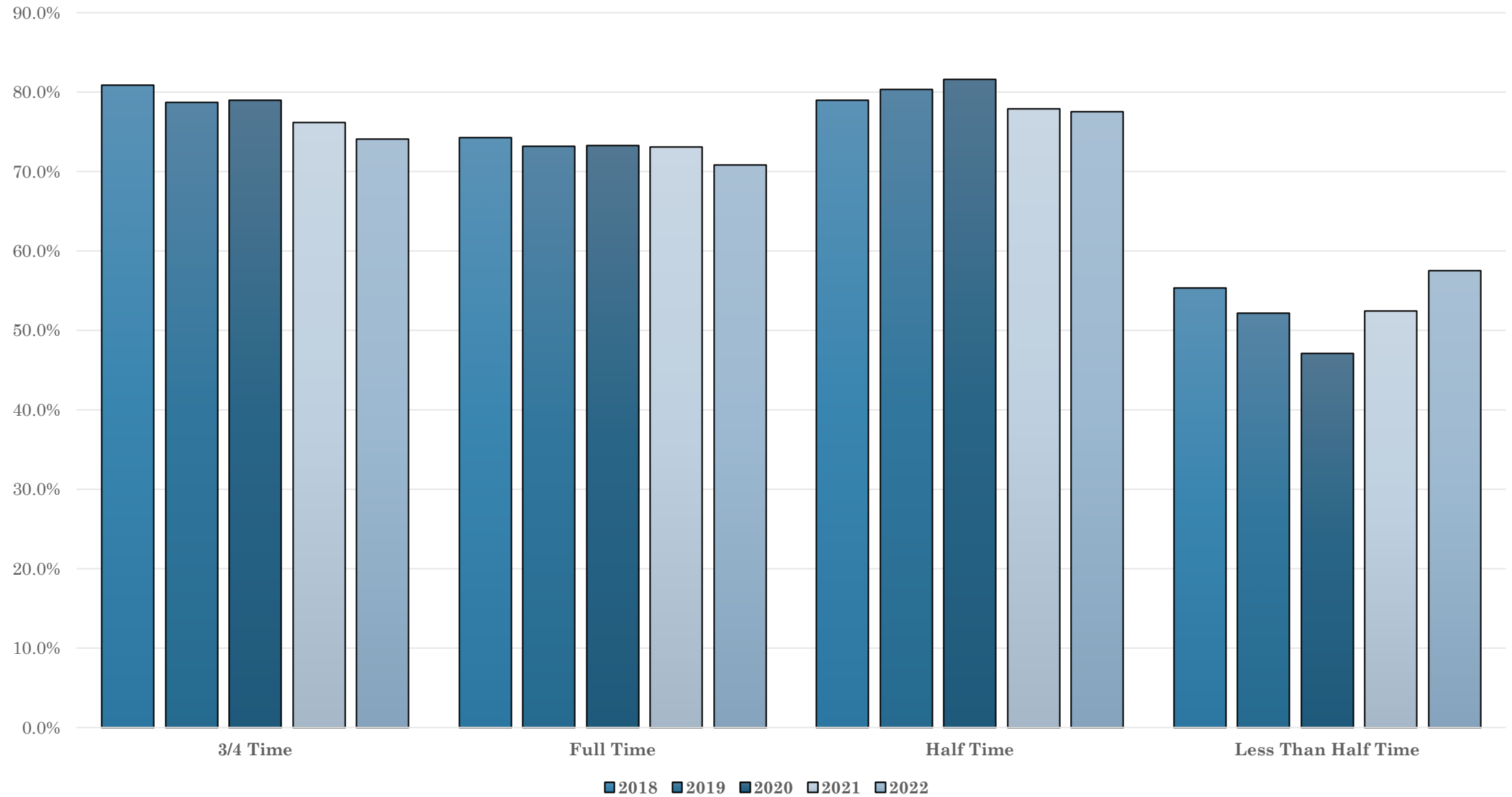
Source: Argos Grades Analysis Data Block, 2018-2022

# Successful Grade Rate by Individual Disability



Source: Argos Grades Analysis Data Block, 2018-2022

# Successful Grade Rate by Enrollment Intensity



Source: Argos Grades Analysis Data Block, 2018-2022